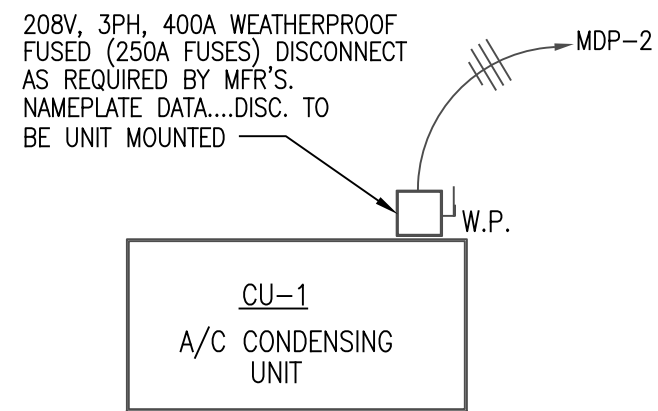
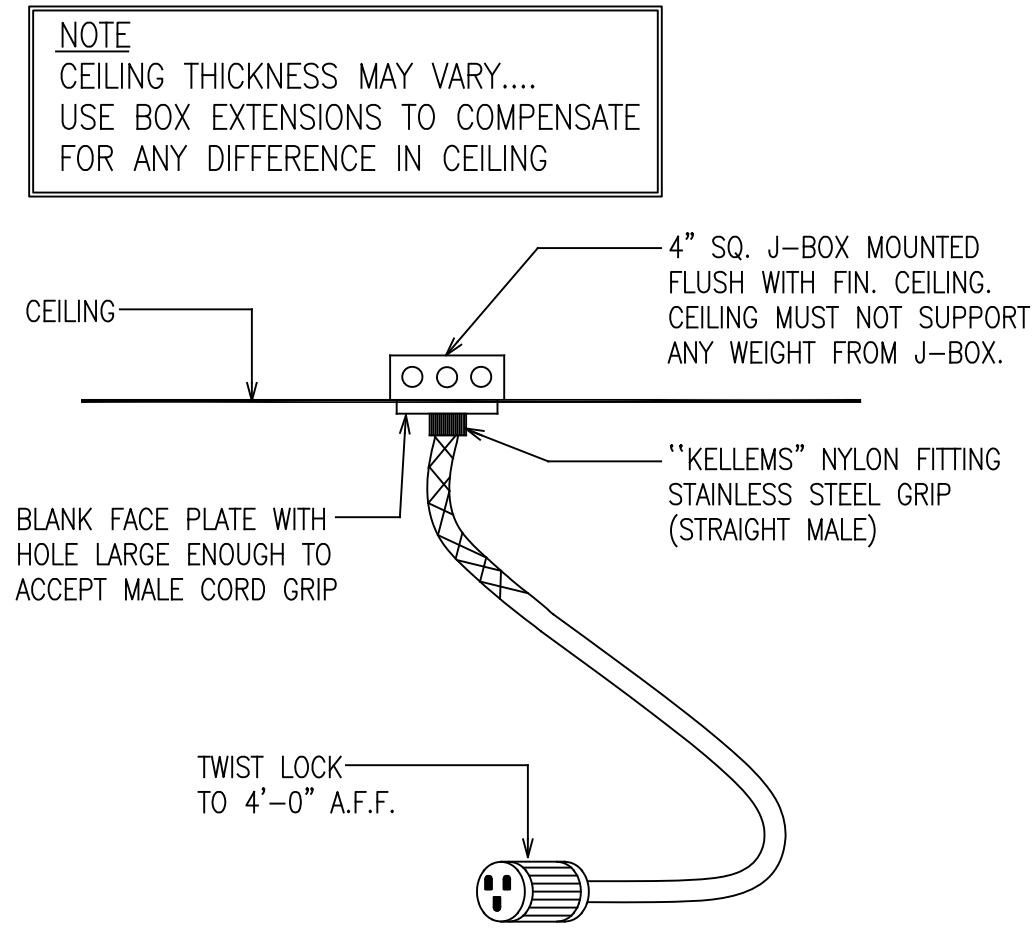


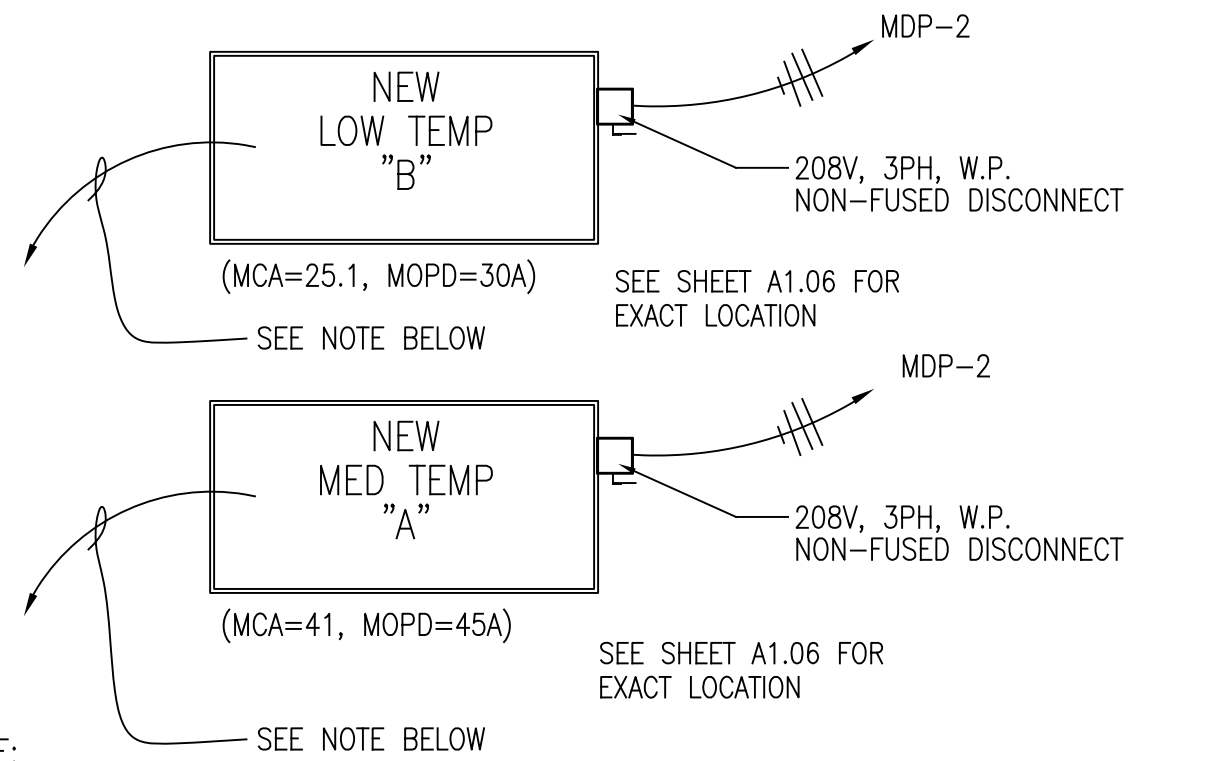
E:\1458 Laurel, DE\1458 E5.01.dwg



1 ROOFTOP H.V.A.C. EQUIPMENT DETAIL
E5.01 NOT TO SCALE

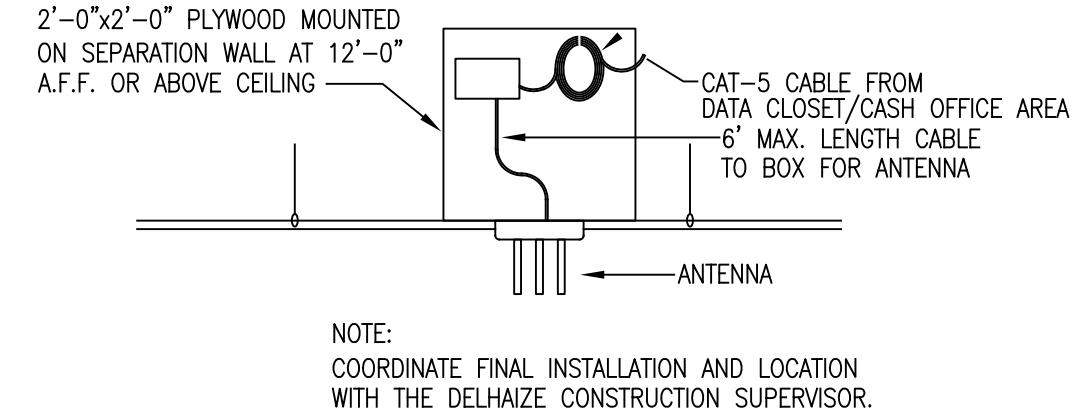


2 HANGING TWIST LOCK DETAIL
E5.01 NOT TO SCALE

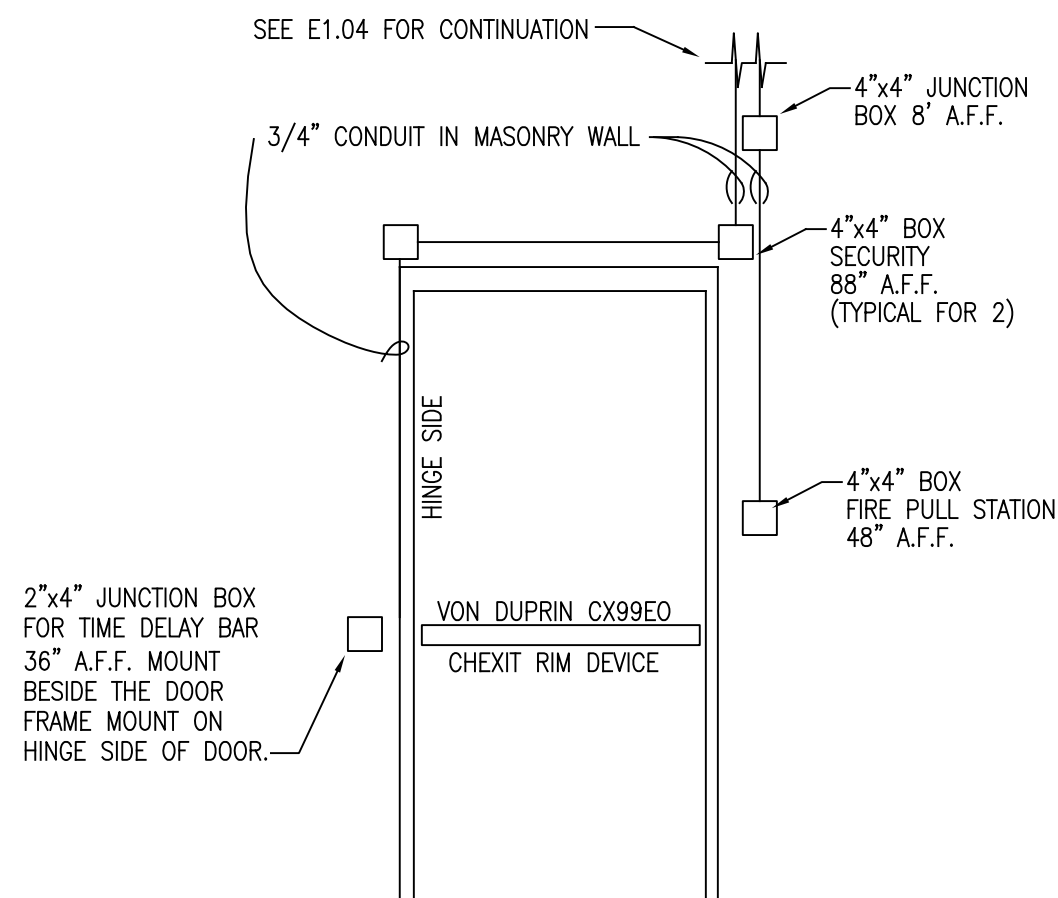


NOTE:
RUN A SEPARATE 3/4" CONDUIT FROM EACH REFRIGERATION CONTROLLER TO ITS RESPECTIVE CONDENSER, CONTAINING (1) 4-WIRE SHIELDED CABLE (BELDON #8760) FOR COMMUNICATION. ONLY SHIELDED CABLES SHALL BE RUN IN THIS CONDUIT.

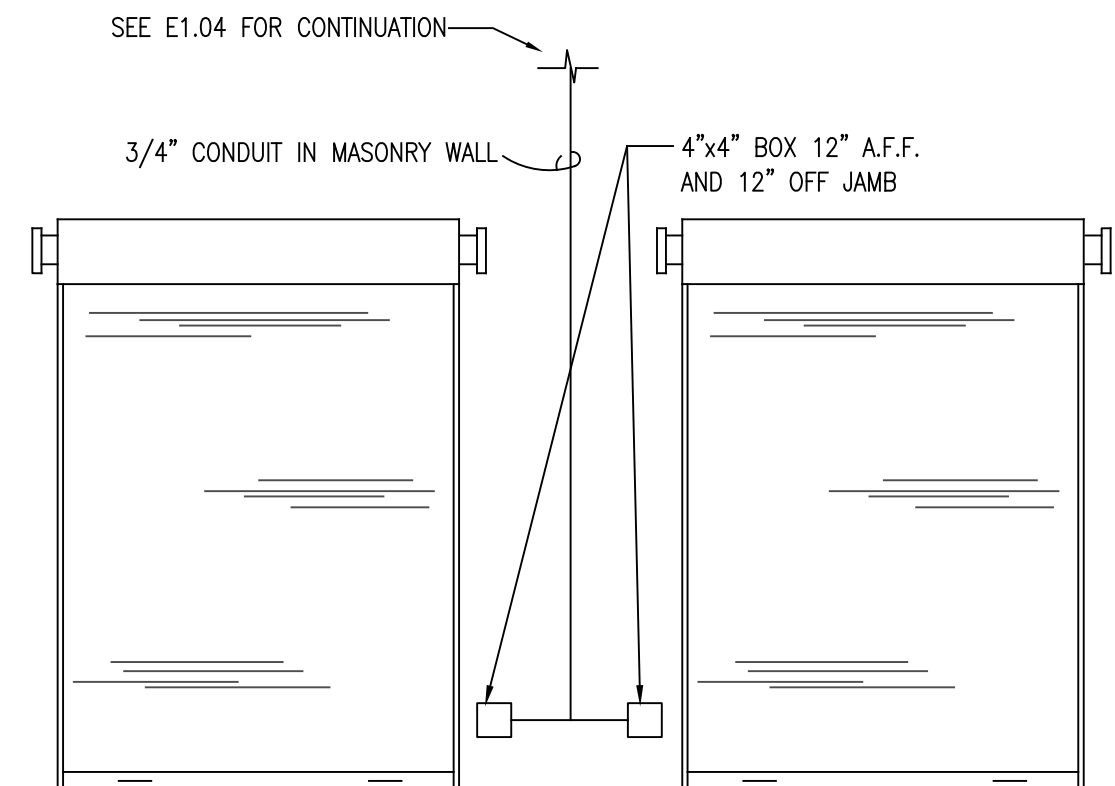
3 ELECTRICAL DETAIL FOR CONDENSERS ON ROOF
E5.01 NOT TO SCALE



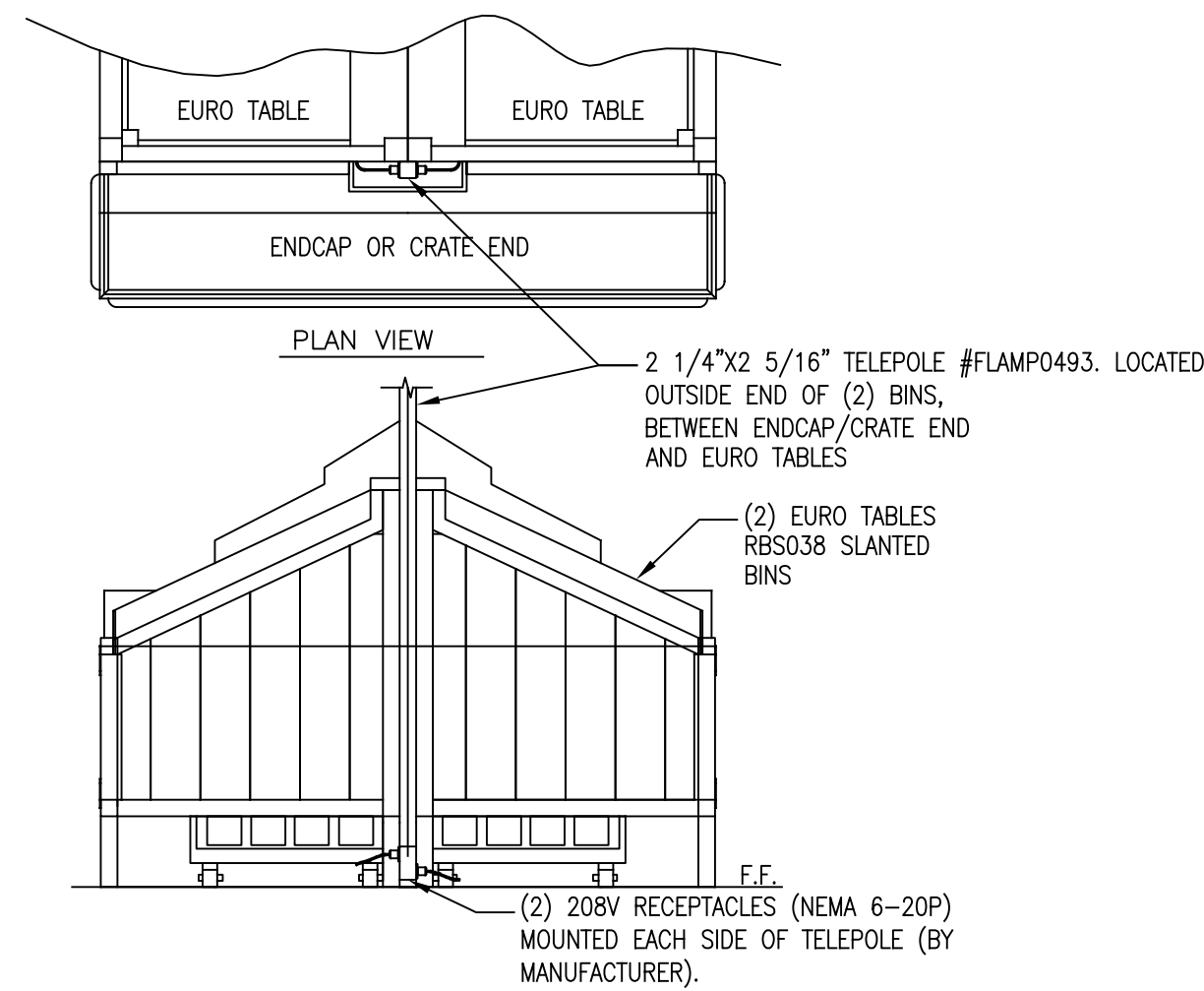
4 CAT 5 CABLE PLYWOOD BACKBOARD DETAIL
E5.01 NOT TO SCALE



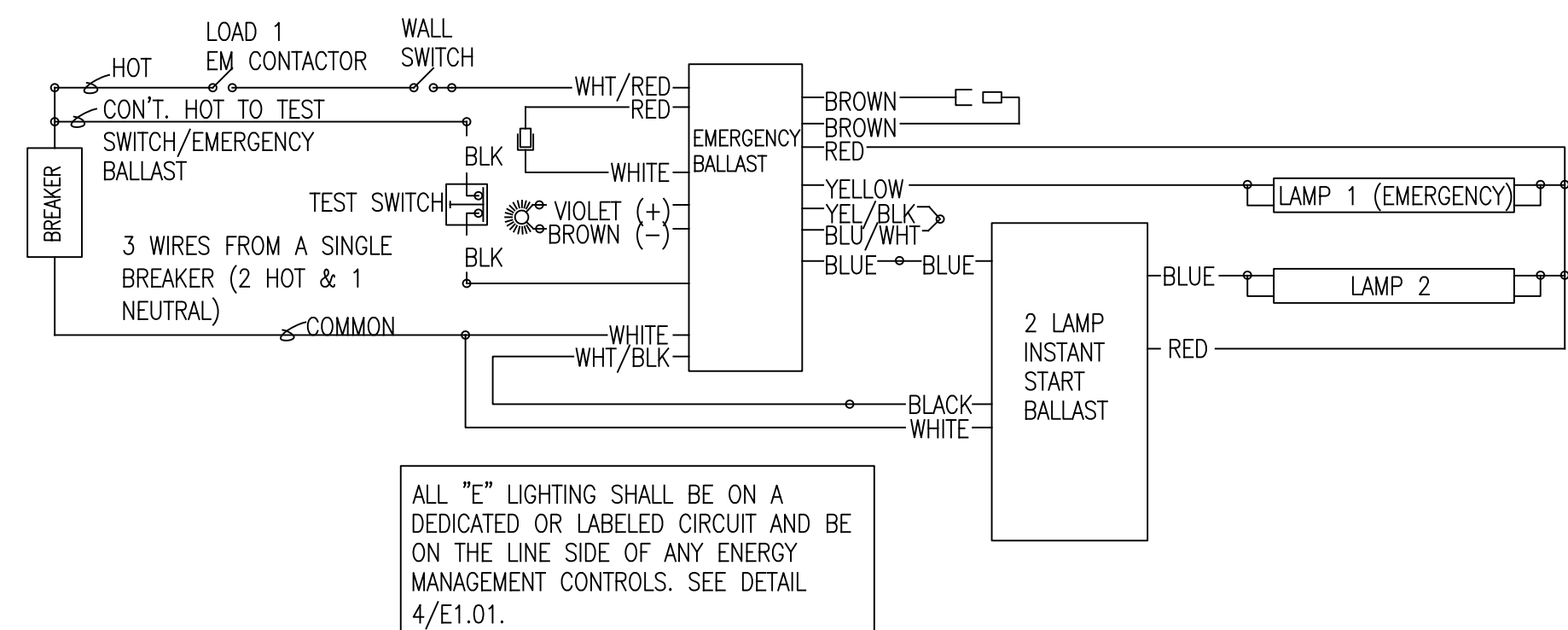
5 SECURITY CONDUIT - DETAIL #1
E5.01 NOT TO SCALE



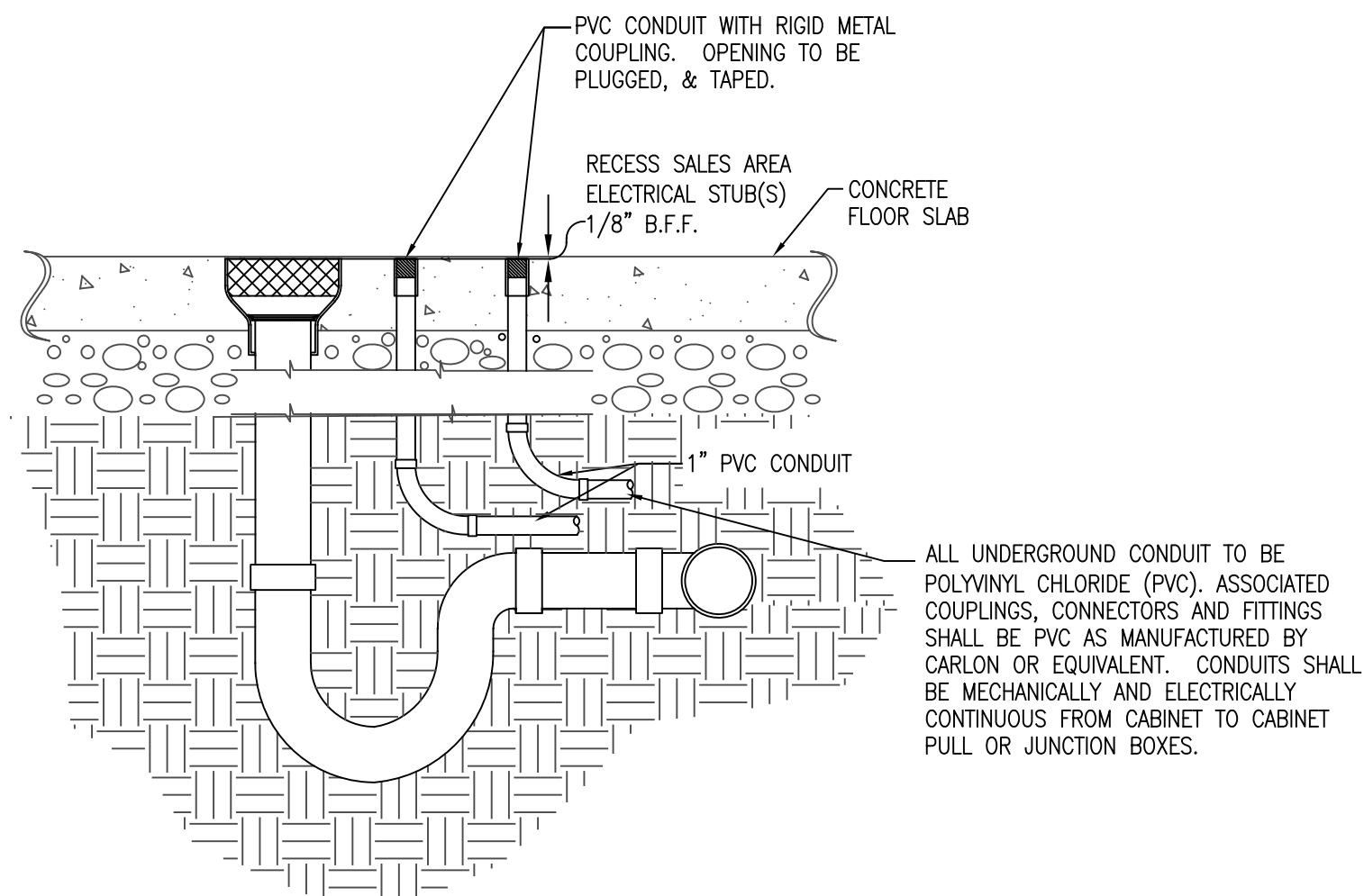
6 SECURITY CONDUIT - DETAIL #2
E5.01 NOT TO SCALE



7 SIDE ELEVATION DUAL PRODUCE SLANT BINS
E5.01 NOT TO SCALE



8 EMERGENCY FIXTURE BALLAST/EMS LOAD WIRING DIAGRAM
E5.01 NOT TO SCALE



9 SALES FLOOR ELECTRICAL STUBS @ CASES
E5.01 NOT TO SCALE

LEGEND

- S SINGLE POLE SWITCH
- Swp WEATHERPROOF SWITCH
- Sp SINGLE POLE SWITCH WITH PILOT LIGHT
- S3p THREE-WAY SWITCH WITH PILOT LIGHT
- Sm SINGLE POLE, MOTOR RATED SWITCH.
- ⊕ DUPLEX RECEPTACLE
- ⊕_{W.P.} WEATHERPROOF RECEPTACLE
- ⊕₄ QUADRUPLEX RECEPTACLE
- ⊕ SPECIAL PURPOSE OUTLET (TYPE AS NOTED)
- ⊕ 4"x4" JUNCTION BOX
- ⊕ TELEPHONE JACK
- ⊕ MIC OR INTERCOM (AS NOTED)
- ⊕ DISCONNECT SWITCH (TYPE AS NOTED)
- ⊕ THERMOSTAT
- ⊕ MAGNETIC SWITCH

- ⊕ DROP FROM CEILING
- ⊕ NEW FLOOR STUB-UP
- ⊕ ELECTRICAL CONNECTION UNDER CASE
- ⊕ FLUORESCENT FIXTURE
- ⊕ LIGHT FIXTURE (SEE LIGHT FIXTURE SCHEDULE, SHEET E-1)
- ⊕ EXIT LIGHT
- ⊕ EMERGENCY LIGHT FIXTURE
- ⊕ FAN MOTOR (HORSEPOWER AS NOTED)
- ⊕ PUSHBUTTON
- ⊕ SIGNAL BELL
- ⊕ SENSOR, TEMP/HUMIDITY (HANDY BOX MTD.)
- ⊕ SC SCALE COMMUNICATION OUTLET
- ⊕ MOTOR STARTER
- ⊕ FLOOR BOX WITH BRASS TRIM AND DUPLEX RECEPTACLE.